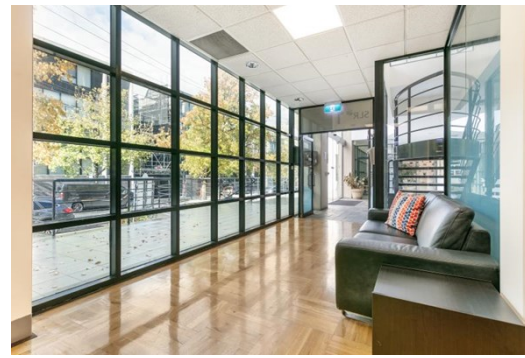


Tenancy 1 & 2 2 Domville Avenue, HAWTHORN FOR LEASE



FULLY FITTED QUALITY ACCOMMODATION

Description

- TWO FANTASTICALLY FITTED TENANCY'S
- ON-SITE PARKING AVAILABLE
- END OF TRIP FACILITIES

* Floor Areas range from: 325-650sqm*

* TENANCY 1:

- Boardroom
- 20 Individual desks
- 4 Private offices
- Storage area
- Kitchen/Staff area

* TENANCY 2

- 16 Individual desks
- 6 Private offices
- Data Room
- Private entry/exit
- Storage area

Both tenancy's also benefit from male and female amenities, shower and ample car parking is available onsite.

FOR AN IMMEDIATE INSPECTION CALL US TODAY!

*Approx

Area m²: 325.00

Rent PA: Contact Agent

Outgoings: Payable by Lessee

Contact: **Joshua Colosimo**
0413 790 309
joshuacolosimo@allardshelton.com.au

Patrick Kerr
0451 142 791
patrickkerr@allardshelton.com.au

Joseph Walton
0417 309 347
joewalton@allardshelton.com.au