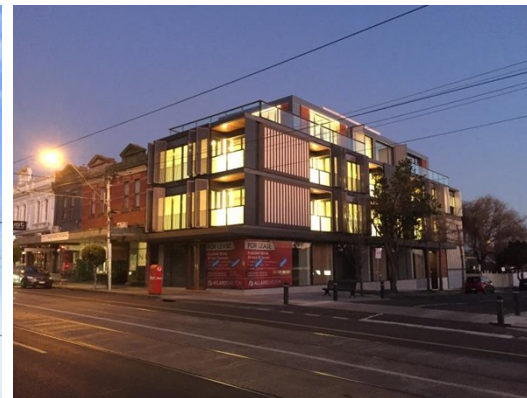


Suite 302 40 Seymour Avenue, ARMADALE

FOR LEASE



SPECTACULAR OFFICE SUITE IN THE HEART OF ARMADALE

Description

- PRIME LOCATION
- FANTASTIC VIEWS
- MODERN BUILDING

* Fantastic penthouse level executive office/home office suite of 53 sqm*

* Perfectly positioned, perched above the heart of High Street, Armadale

* Benefiting from 2 wonderful entertaining decks

* Sweeping views of the bay, CBD and Dandenong's

* Situated close to a plethora of quality retailers service providers and cafes in the heart of Armadale's major activity centre

* Well serviced by public transport

FOR AN IMMEDIATE INSPECTION CALL US TODAY!

*approx

Area m²: 53.00

Rent PA: Contact Agent

Outgoings: Payable by Lessee

Contact: **Joseph Walton**
0417 309 347
joewalton@allardshelton.com.au

Patrick Kerr
0451 142 791
patrickkerr@allardshelton.com.au