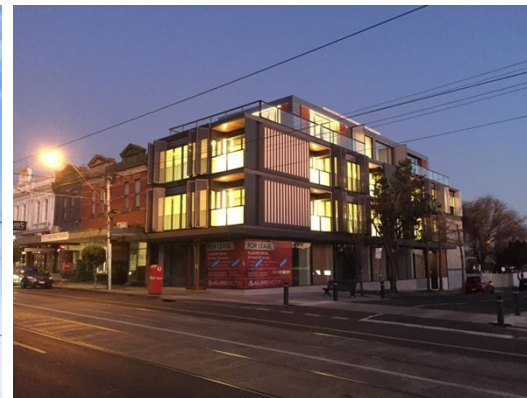


Suite 302 40 Seymour Avenue, ARMADALE

FOR LEASE



## SPECTACULAR OFFICE SUITE IN THE HEART OF ARMADALE

### Description

- PRIME LOCATION
- FANTASTIC VIEWS
- MODERN BUILDING

- \* One penthouse level executive office/home office suite
- \* Perfectly positioned, perched above the heart of High Street, Armadale
- \* Wonderful entertaining decks
- \* Sweeping views of the bay, CBD and Dandenongs
- \* Suite 302 - 53 sqm\*

FOR AN IMMEDIATE INSPECTION CALL US TODAY!

\*approx

**Area m<sup>2</sup>:** 53.00

**Rent PA:** Contact Agent

**Outgoings:** Payable by Lessee

**Contact:** **Joseph Walton**  
0417 309 347  
joewalton@allardshelton.com.au

**Patrick Kerr**  
0451 142 791  
patrickkerr@allardshelton.com.au