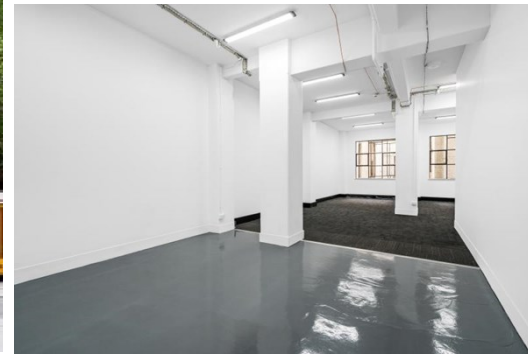
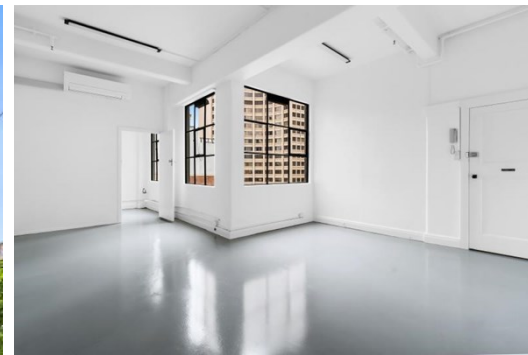


Level 7 & 8 Suite 1 & 2 3 & 4 94 Elizabeth Street,  
MELBOURNE

FOR LEASE



## UNIQUE OFFICE SUITES IN MELBOURNE'S CBD

### Description

- SPACES BETWEEN 15-70 SQM\*
- LIGHT WELL SUITES
- CENTRAL LOCATION

\* Suites available for lease range between 13-200 sqm\*

- Level 4, Suite 1 - 92 sqm\*
- Level 4, Suite 2 - 60 sqm\*
- Level 6 - 200 sqm\*
- Level 7, Suite 3 - 29sqm\*
- Level 8, Suite 4 - 15 sqm\*
- Level 8, Suite 5 - 37 sqm\*

Natural lighting enhancing the suites in a location close to all amenities, public transport and members of the CBD.

FOR AN IMMEDIATE INSPECTION CALL US TODAY!

\*approx.

**Area m<sup>2</sup>:** 200.00

**Rent PA:** Contact Agent

**Outgoings:**

**Contact:** **Patrick Kerr**  
0451 142 791  
patrickkerr@allardshelton.com.au

**Jarrold Nankin**  
0422 800 228  
jarroldnankin@allardshelton.com.au