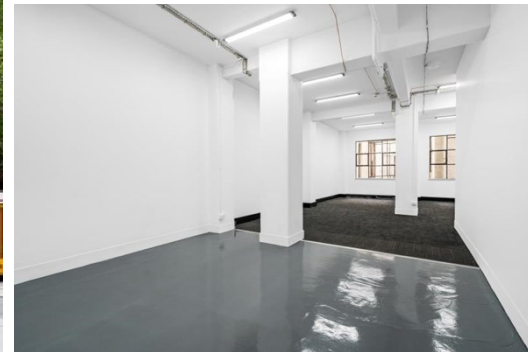
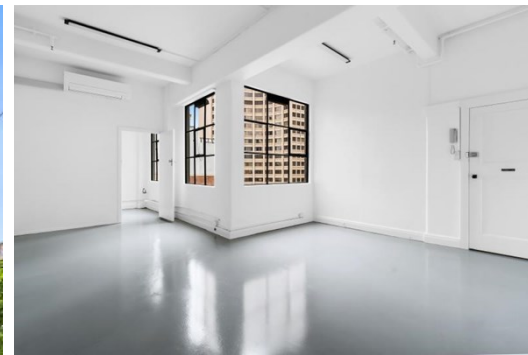


Level 7 & 8 Suite 1 & 2 3 & 4 94 Elizabeth Street,
MELBOURNE

FOR LEASE



UNIQUE OFFICE SUITES IN MELBOURNE'S CBD

Description

- SPACES BETWEEN 15-70 SQM*
- LIGHT WELL SUITES
- CENTRAL LOCATION

* Suites available for lease range between 13-200 sqm*

- Mezzanine - 170 sqm*
- Level 2, Suite 2 - 60 sqm*
- Level 4, Suite 1 - 92 sqm*
- Level 4, Suite 2 - 60 sqm*
- Level 6 - 200 sqm*
- Level 8, Suite 4 - 15 sqm*
- Level 8, Suite 5 - 37 sqm*
- Level 8, Suite 6 - 25 sqm*

Natural lighting enhancing the suites in a location close to all amenities, public transport and members of the CBD.

FOR AN IMMEDIATE INSPECTION CALL US TODAY!

*approx.

Area m²: 200.00

Rent PA: Contact Agent

Outgoings:

Contact:

Patrick Kerr
0451 142 791
patrickkerr@allardshelton.com.au

Jarrold Nankin
0422 800 228
jarroldnankin@allardshelton.com.au