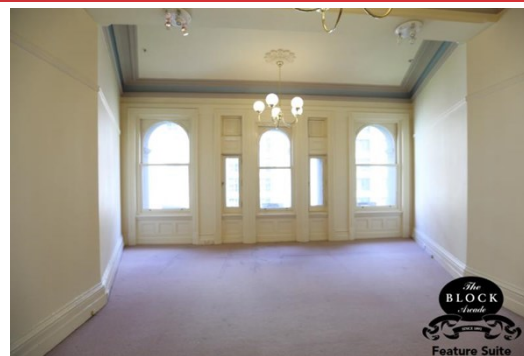


# Executive Suites 282-284 Collins Street, MELBOURNE

## FOR LEASE



## THE BLOCK ARCADE - EXECUTIVE OFFICES, STUDIOS & WORKSPACES

### Description

- LOCATED WITHIN THE ICONIC BLOCK ARCADE
- BOUTIQUE SUITES OF VARIOUS SIZES
- QUALITY SHARED AMENITIES

Block Arcade Executive Offices, Studios & Workspaces

- \* Various executive suites available
- \* Sizes starting at 10 sqm-157 sqm (approx.)
- \* Exceptional views up and down Collins Street
- \* Quality shared amenities
- \* Cost effective gross rentals
- \* Prestigious Collins Street address in Melbourne's most iconic building

Located in the iconic Block Arcade, these executive offices, studios & workspaces provide an outstanding opportunity to lease a boutique space in one of Melbourne's most renowned complexes.

FOR AN IMMEDIATE INSPECTION CALL US TODAY!

**Area m<sup>2</sup>:** 157.00

**Rent PA:** Contact Agent

**Outgoings:**

**Contact:** **Veronica Nonnis**  
0405 873 166  
veronicanonnis@allardshelton.com.au

**Jessica Horan**  
0413 001 315  
jessicahoran@allardshelton.com.au