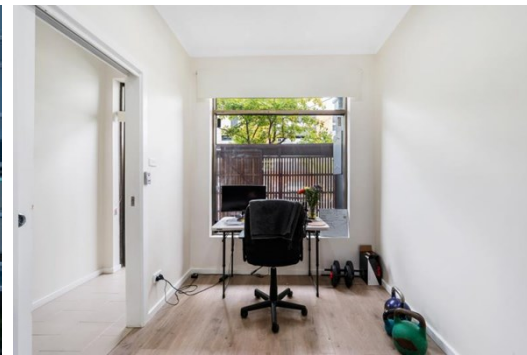


56 Rosslyn Street, WEST MELBOURNE

FOR LEASE



STANDALONE WEST MELBOURNE OFFERING

Description

- TENANCY AREA: 100 SQM
- VARIOUS OFFICES & END OF TRIP FACILITIES
- SUITS A VARIETY OF USES (STCA)

Gorman Allard Shelton are pleased to offer for lease a hidden gem on the office fringe.

Located on the immediate fringe of the CBD, this property provides a flexible and very appealing layout to a wide variety of businesses.

- Tenancy area: 100sqm
- Three offices/consulting rooms
- Kitchen, bathroom and shower amenities
- Rear access to lane way
- Excellent signage potential for businesses

Please don't hesitate in contacting the exclusive agents below to obtain further information

Area m²: 100.00

Rent PA: CONTACT AGENT

Outgoings:

Contact:

Patrick Kerr
0451 142 791
patrickkerr@allardshelton.com.au

Michael Ryan
0433 180 199
michaelryan@allardshelton.com.au