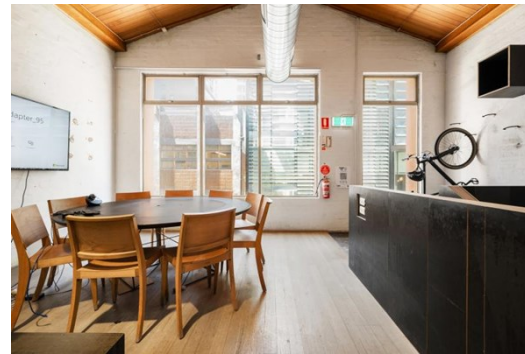


# Level 2 322 Little Lonsdale Street, MELBOURNE FOR LEASE



## WHOLE FLOOR LOFT FEEL OPPORTUNITY

### Description

- WELCOME BACK TO THE CITY
- NY LOFT STYLE SPACE
- PRIVATE WHOLE FLOOR OPPORTUNITY

Come back to the City in style with Level 2 at 322 Lt Lonsdale Street.

This rare and unique space will captivate you on the first inspection with its high ceilings, spacious open plan, amenities and retro feel.

Surrounded by the best the CBD has to offer, with popular lunchtime and shopping destinations right outside the front door - Level 2 at 322 Lonsdale St is the perfect new home for any new, growing or established business.

CALL NOW TO ARRANGE AN INSPECTION!

**Area m<sup>2</sup>:** 120.00

**Rent PA:** CONTACT AGENT

**Outgoings:**

**Contact:**

**Jarrold Nankin**  
0422 800 228  
jarroldnankin@allardshelton.com.au

**Patrick Kerr**  
0451 142 791  
patrickkerr@allardshelton.com.au