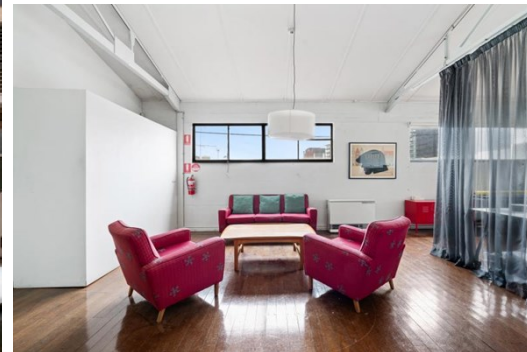
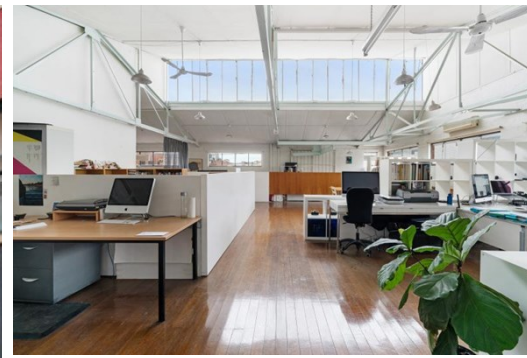


Level 1 Suite 2 104 Dover Street, CREMORNE

FOR LEASE



CREMORNE'S MOST AFFORDABLE OFFICE SPACE

Description

- SUBSTANTIAL OPEN-PLAN OFFICE SPACE
- DYNAMIC CREMORNE CREATIVE PRECINCT
- WALK TO MELBOURNE CBD & TRAMS/TRAINS

* Total lettable area: 190 sqm*

* Expansive, open plan first floor office space

* Located within the creative heartland of Melbourne's premier commercial precinct

* Abundance of natural light

* Excellent accessibility to Public Transport

* Split system heating/cooling unit

* Surrounded by cafes, bars and some of Melbourne's finest eateries

* Toilet & Kitchenette facilities

* Easy access to Melbourne CBD and major arterial roads

* Suitable for a variety of uses (STCA)

FOR AN IMMEDIATE INSPECTION CALL US TODAY!

*Approx.

Area m²: 190.00

Rent PA: CONTACT AGENT

Outgoings: Gross Lease

Contact: **Joshua Colosimo**
0413 790 309
joshuacolosimo@allardshelton.com.au