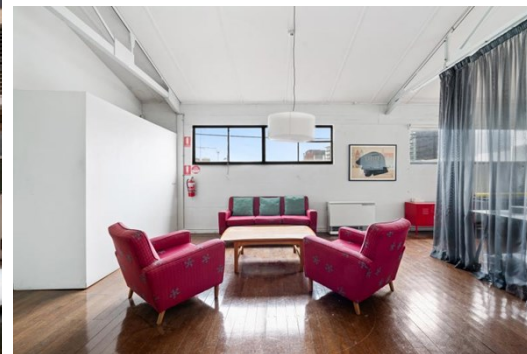
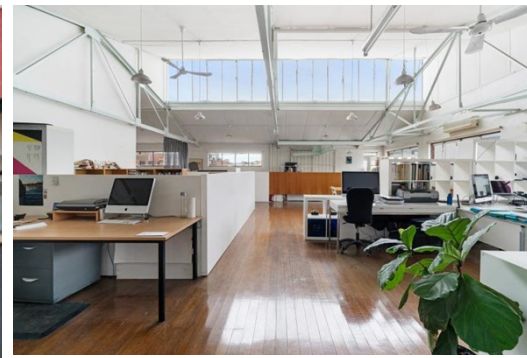


Level 1 Suite 2 104 Dover Street, CREMORNE

FOR LEASE



## BEST VALUE IN THE HEART OF CREMORNE!

### Description

- SUBSTANTIAL OPEN-PLAN OFFICE SPACE
- DYNAMIC CREMORNE CREATIVE PRECINCT
- WALK TO MELBOURNE CBD & TRAMS/TRAINS

\* Total lettable area: 190 sqm\*

\* Expansive, open plan first floor office space

\* Located within the creative heartland of Melbourne's premier commercial precinct

\* Abundance of natural light

\* Excellent accessibility to Public Transport

\* Split system heating/cooling unit

\* Surrounded by cafes, bars and some of Melbourne's finest eateries

\* Toilet & Kitchenette facilities

\* Easy access to Melbourne CBD and major arterial roads

\* Suitable for a variety of uses (STCA)

FOR AN IMMEDIATE INSPECTION CALL US TODAY!

\*Approx.

**Area m<sup>2</sup>:** 190.00

**Rent PA:** CONTACT AGENT

**Outgoings:** Gross Lease

**Contact:** **Joshua Colosimo**  
0413 790 309  
[joshuacolosimo@allardshelton.com.au](mailto:joshuacolosimo@allardshelton.com.au)