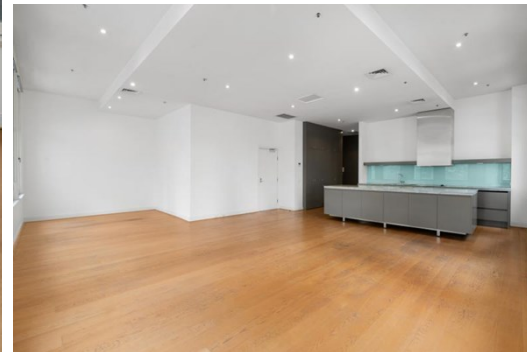


Suite 101 300 Collins Street, MELBOURNE

FOR LEASE



## SUPERB OFFICE IN PRIME LOCATION

### Description

- TENANCY AREA: 138 SQM
- FULLY FITTED & SELF CONTAINED
- PROMINENT CORNER LOCATION

Gorman Allard Shelton are pleased to offer this extremely rare and unique property, the property features from:

- Entire first floor of "Cashmore House"
- Prominent location on the corner of Collins and Elizabeth Street.
- Abundance of natural light
- Fully fitted with modern kitchen appliances and EOT facilities

Ideally situated on the North-East corner of Collins & Elizabeth Streets and spanning an entire floor of the prestigious "Cashmore House", this provides an unrivalled and fully self contained office/residential dwelling.

Featuring generous kitchen amenities and state of the art appliances, you could be hosting your next client event in-house!

**Area m<sup>2</sup>:** 138.00

**Rent PA:** CONTACT AGENT

**Outgoings:** Payable by Lessee

**Contact:** **Patrick Kerr**  
0451 142 791  
[patrickkerr@allardshelton.com.au](mailto:patrickkerr@allardshelton.com.au)

**Joseph Walton**  
0417 309 347  
[joewalton@allardshelton.com.au](mailto:joewalton@allardshelton.com.au)