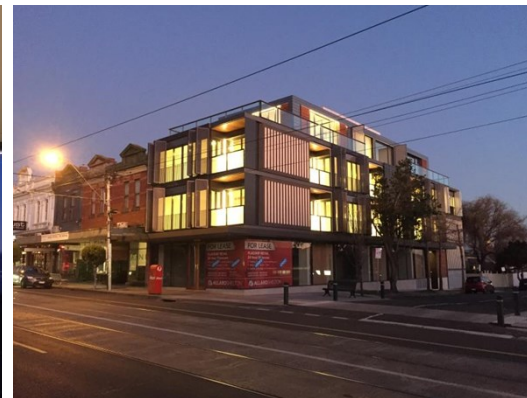
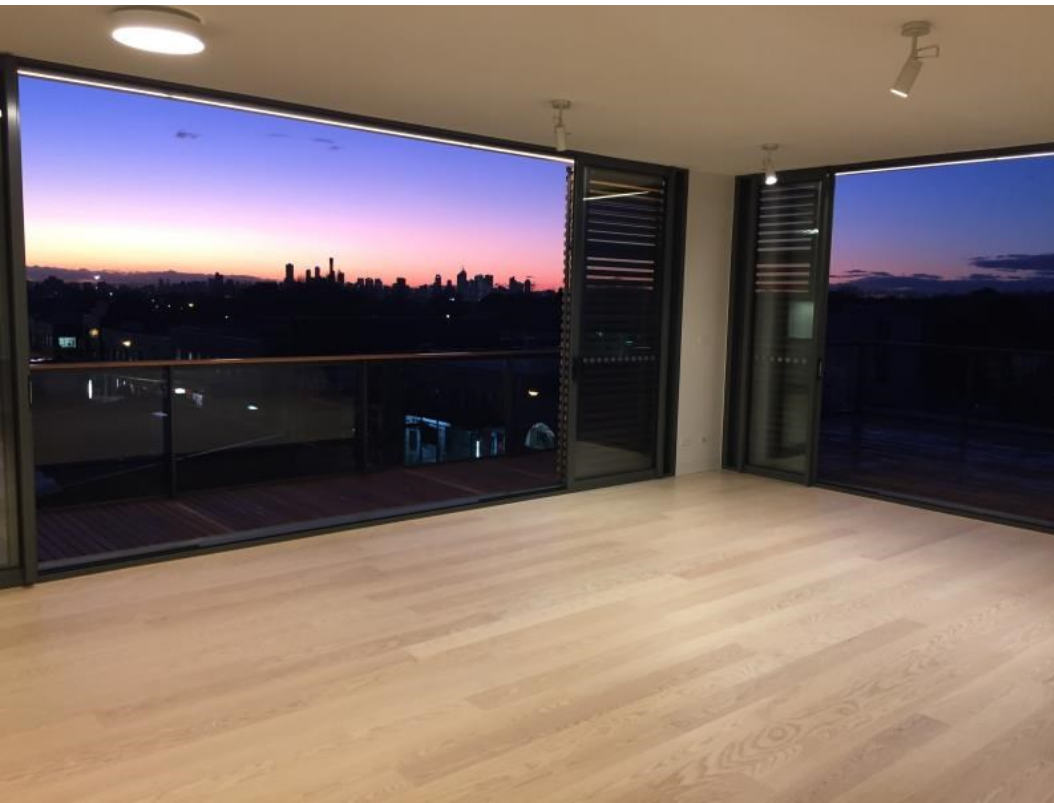


Suite 302 40 Seymour Avenue, ARMADALE

FOR LEASE



## SPECTACULAR OFFICE SUITE IN THE HEART OF ARMADALE

### Description

- OUTSTANDING LOCATION
- SENSATIONAL VIEWS
- IMMACULATE BUILDING

Allard Shelton is delighted to present for lease, this immaculate executive office space located in the heart of thriving Armadale.

\* Fantastic penthouse level executive office/home office suite of 53 sqm\*

\* Perfectly positioned, perched above the heart of High Street Armadale with renowned retailer Stylerunner on the ground floor.

\* Benefiting from 2 wonderful entertaining decks totalling 27 sqm\*

\* Sweeping views of the bay, CBD, the Dandenong's and the magnificent heritage rooftops of Armadale and beyond.

\* Situated close to a plethora of quality retailers service providers and cafes in the heart of Armadale's major activity centre

\* Well serviced by public transport

FOR AN IMMEDIATE INSPECTION CALL US TODAY!

**Area m<sup>2</sup>:** 53.00

**Rent PA:** Contact Agent

**Outgoings:** Payable by Lessee

**Contact:** **Joseph Walton**  
0417 309 347  
joewalton@allardshelton.com.au

**Joshua Colosimo**  
0413 790 309  
joshuacolosimo@allardshelton.com.au

**Patrick Kerr**  
0451 142 791  
patrickkerr@allardshelton.com.au