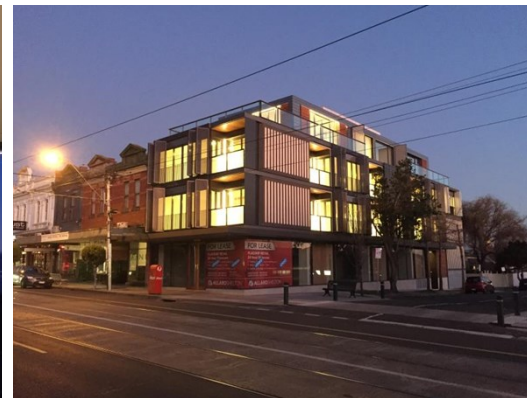


Suite 302 40 Seymour Avenue, ARMADALE

FOR LEASE



SPECTACULAR OFFICE SUITE IN THE HEART OF ARMADALE

Description

- OUTSTANDING LOCATION
- SENSATIONAL VIEWS
- IMMACULATE BUILDING

Allard Shelton is delighted to present for lease, this immaculate executive office space located in the heart of thriving Armadale.

* Fantastic penthouse level executive office/home office suite of 53 sqm*

* Perfectly positioned, perched above the heart of High Street Armadale with renowned retailer Stylerunner on the ground floor.

* Benefiting from 2 wonderful entertaining decks totalling 27 sqm*

* Sweeping views of the bay, CBD, the Dandenong's and the magnificent heritage rooftops of Armadale and beyond.

* Situated close to a plethora of quality retailers service providers and cafes in the heart of Armadale's major activity centre

* Well serviced by public transport

FOR AN IMMEDIATE INSPECTION CALL US TODAY!

Area m²: 53.00

Rent PA: Contact Agent

Outgoings: Payable by Lessee

Contact: **Patrick Kerr**
0451 142 791
patrickkerr@allardshelton.com.au

Joseph Walton
0417 309 347
joewalton@allardshelton.com.au