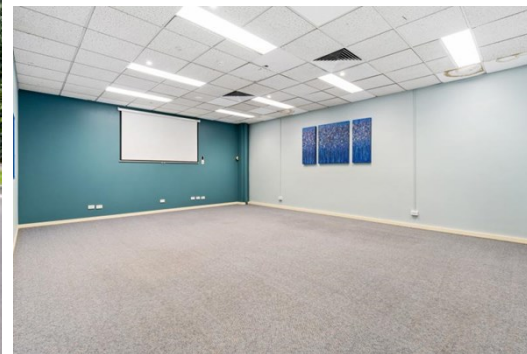


31-33 Ellingworth Parade, BOX HILL

FOR LEASE



OUTSTANDING OFFICE SPACE IN PREMIER BOX HILL PRECINCT

Description

- TOTAL LETTABLE AREA: 920SQM* (approx)
- TWENTY-ONE (21) ON-SITE CAR SPACES
- DIRECT PROXIMITY TO MAJOR ARTERIAL ROADS

Allard Shelton is delighted to offer for lease this outstanding office space located within the highly sought after Box Hill commercial precinct.

The property benefits from a versatile mix of open-plan and partitioned office space and can accommodate up to twenty-one (21) on-site undercover car spaces.

- * Total lettable area: 920sqm* (approx.)
- * Twenty-one (21) on-site undercover car spaces
- * Outstanding mix of open-plan and partitioned office space
- * Abundance of natural light
- * Heating/cooling throughout
- * Attractive lease terms and incentives on offer
- * Ideally located within central Box Hill Location
- * Just 300m away from Box Hill train station

FOR AN IMMEDIATE INSPECTION, CALL US TODAY!

*Approx

Area m²: 920.00

Rent PA: Contact Agent

Outgoings: Payable by Lessee

Contact: **Joshua Colosimo**
0413 790 309
joshuacolosimo@allardshelton.com.au

Christian Hatzis
0452 544 844
ChristianHatzis@allardshelton.com.au