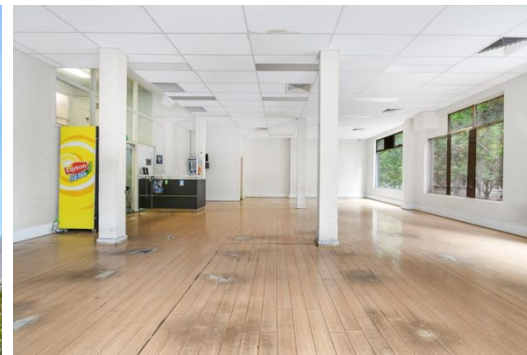


Level 1 Suite 2 253 Lonsdale Street,
MELBOURNE

FOR LEASE



WELL POSITIONED OFFICE OPPOSITE QV

Description

- WELL POSITIONED OPPOSITE QV & MCDONALDS
- SURROUNDED BY CBD AMENITIES
- LARGE FITTED OR OPEN FLOORPLAN

Situated on the top floor of popular Godfrey House, this suite faces the bustling corner of Lonsdale and Swanston St, primly positioned to capture the afternoon sun, the sites and scenes of the city, and a plethora of amenities at your doorstep.

Your business will not be disappointed by the masses of national retailers, food and drink amenities, shopping and lifestyle being located on this corner has to offer.

With 190sqm of flexible open space, complete with kitchen and toilets, boardrooms, you can move in immediately or have it all removed and start from scratch.

FOR AN IMMEDIATE INSPECTION, CALL US TODAY!

*Approx

Area m²: 121.00

Rent PA: CONTACT AGENT

Outgoings: Payable by Lessee

Contact: **Patrick Kerr**
0451 142 791
patrickkerr@allardshelton.com.au