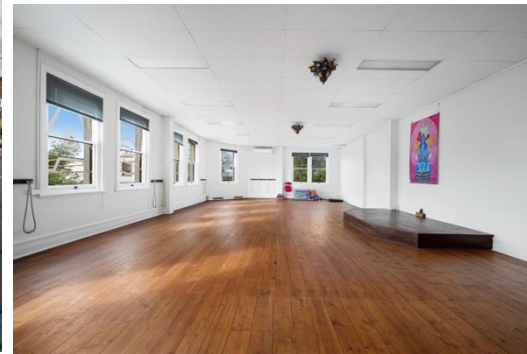


Suite 1 220 Carlisle Street, BALACLAVA

FOR LEASE



## Bright & Prime Positioned Flexible Space

### Description

- OVERLOOKING CARLISLE STREET
- SURROUNDED BY NATIONAL RETAILERS
- WELL APPOINTED INTERNALLY

Suite 1 at 220 Carlisle St is a street facing open plan flexible space suitable to many uses, from office, to recreation, to showroom or consulting.

Including private amenities and bathroom, the space is an all encompassing opportunity overlooking and located in the heart of the ever growing and popular Carlisle St.

Available for short or long term occupation, this space will not last long boasting all that it does.

CALL NOW TO ARRANGE YOUR INSPECTION!

**Area m<sup>2</sup>:** 132.00

**Rent PA:** Contact Agent

**Outgoings:**

**Contact:** **Joshua Colosimo**  
0413 790 309  
joshuacolosimo@allardshelton.com.au

**Patrick Kerr**  
0451 142 791  
patrickkerr@allardshelton.com.au