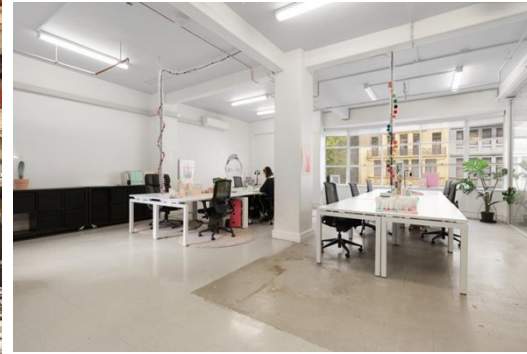
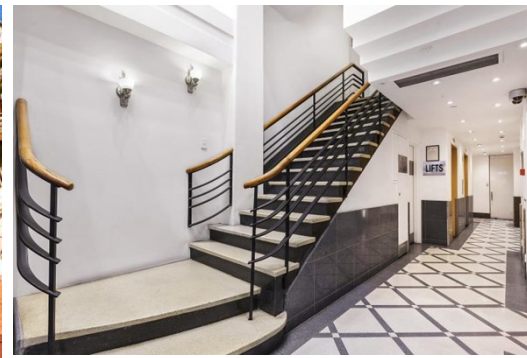


Level 2 Suite 1 94 Elizabeth Street, MELBOURNE FOR LEASE



EXCEPTIONAL ELIZABETH STREET OFFICE

Description

- BEAUTIFULLY WELL APPOINTED SPACE
- ELIZABETH STREET WINDOWS
- PRIVATE AMENITIES

Suite 1 on Level 2 at 94 Elizabeth St comes to the market offering the highest quality office available to the market on Elizabeth St and the City Center. This suite presents beautifully well, capturing an abundance of natural light with its white walls and polished concrete floors. Other benefits of the suite include:

- *Private Kitchen Area
- *Private Toilet
- *Well serviced Heating and Cooling
- *Two separate meeting spaces
- *Large Breakout area
- *Glass entry doors right out the lift

This opportunity is not to be missed if you are in the market for an A grade office space in the heart of the City of Melbourne.

CALL OR EMAIL TODAY TO ARRANGE AN INSPECTION!

Area m²: 135.00

Rent PA: Contact Agent

Outgoings:

Contact: **Jarrod Nankin**
0422 800 228
jarrodnankin@allardshelton.com.au

Patrick Kerr
0451 142 791
patrickkerr@allardshelton.com.au