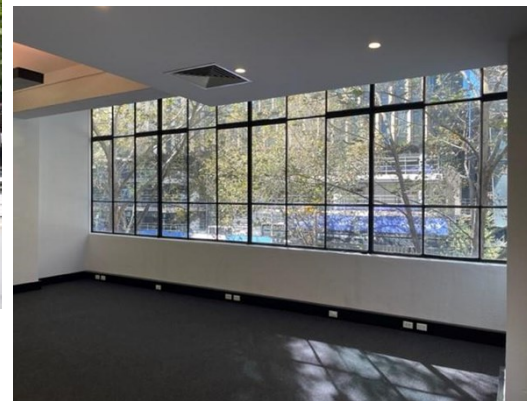


Suite 203 546-566 Collins Street, MELBOURNE

FOR LEASE



HALF RENT ON OFFER FOR FIRST YEAR!

Description

- VERSATILE OFFICE ACCOMMODATION
- SECURE BASEMENT CAR PARKING INCLUDED
- WONDERFUL NATURAL LIGHT

Gorman Allard Shelton are excited to offer to the market this fantastic opportunity. Benefits include;

- * Fantastic and versatile office accommodation of 137 sqm (approx)
- * Comprising open plan areas, partitioned offices, boardroom and kitchenette
- * An ideal location with fantastic amenities
- * Close to public transport and major roadway networks

An opportunity that cannot be missed.

Please don't hesitate to contact us today for an inspection!

Area m²: 137.00

Rent PA: Contact Agent

Outgoings: Payable by Lessee

Contact: **Patrick Kerr**
0451 142 791
patrickkerr@allardshelton.com.au

Jarrold Nankin
0422 800 228
jarroldnankin@allardshelton.com.au