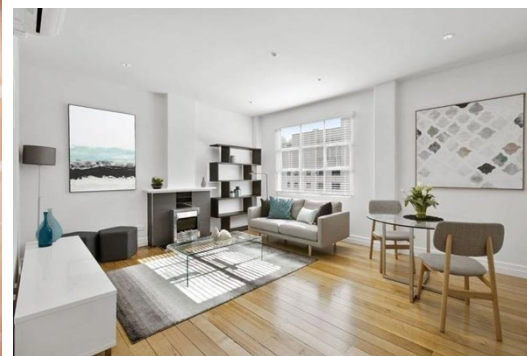
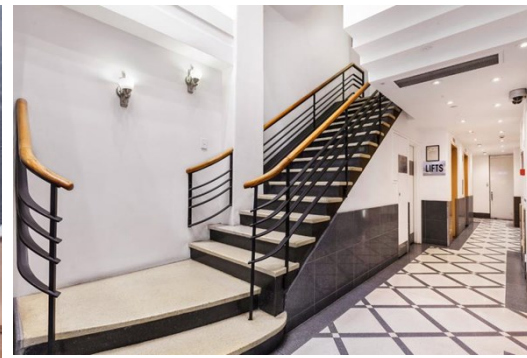


Level 10 Suite 1 94 Elizabeth Street,
MELBOURNE

FOR LEASE



RARE CBD OFFICE/LIVING COMBO

Description

- BRIGHT OPEN OFFICE/LIVING
- CENTRALLY LOCATED IN CBD
- RARE COMBO OPPORTUNITY

Centrally located on the 10th floor of Elizabeth Street's 'Beehive' building, this stunning executive apartment presents an unparalleled opportunity to combine your office with CBD living. The only residential apartment in the building, it offers impeccable views with all the lifestyle delights of the CBD - easy access to public transport, restaurants, shopping, cafes and gardens.

The apartment features an open plan living area flooded with natural light - ideal to incorporate an at-home workspace - as well as a spacious bedroom with built in robes, European style bathroom/laundry, and an Entertainer's kitchen with ample storage space and stainless steel appliances. For ultimate comfort and ease, it also features split system air conditioning, security intercom and lift access.

Fully furnished and ready for you to move right in, don't miss the opportunity to inspect this CBD living/working dream situation for the ultimate city slicker.

FOR AN IMMEDIATE INSPECTION CALL US TODAY!

Area m²: 55.00

Rent PA: Contact Agent

Outgoings:

Contact: **Patrick Kerr**
0451 142 791
patrickkerr@allardshelton.com.au

Jarrold Nankin
0422 800 228
jarroldnankin@allardshelton.com.au