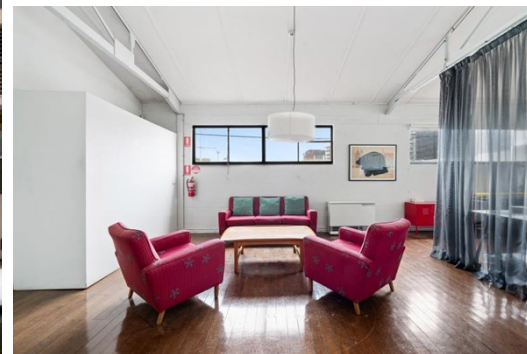
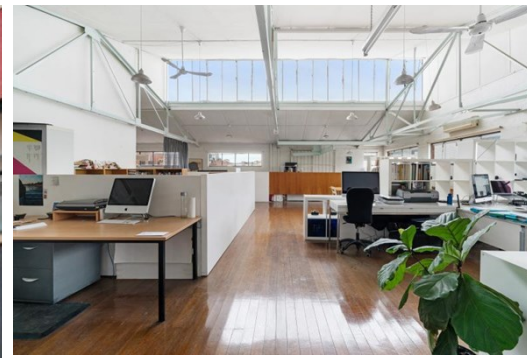


Level 1 Suite 2 104 Dover Street, CREMORNE

FOR LEASE



CREATIVE, LIGHT-FILLED OFFICE IN THE HEART OF CREMORNE

Description

- SUBSTANTIAL OPEN-PLAN OFFICE SPACE
- DYNAMIC CREMORNE COMMERCIAL PRECINCT
- WALK TO MELBOURNE CBD & TRAMS/TRAINS

- * Total lettable area: 190 sqm*
- * Expansive, open plan first floor office space
- * Located within the creative heartland of Melbourne's premier commercial precinct
- * Abundance of natural light
- * Excellent accessibility to Public Transport
- * Split system heating/cooling unit
- * Surrounded by café's, bars and some of Melbourne's finest eateries
- * Toilet & Kitchenette facilities
- * Easy access to Melbourne CBD and major arterial roads
- * Suitable for a variety of uses (STCA)

FOR AN IMMEDIATE INSPECTION CALL US TODAY!

*Approx.

Area m²: 190.00

Rent PA: Contact Agent

Outgoings: Gross Lease

Contact: **Joshua Colosimo**
0413 790 309
joshuacolosimo@allardshelton.com.au

Joseph Walton
0417 309 347
joewalton@allardshelton.com.au