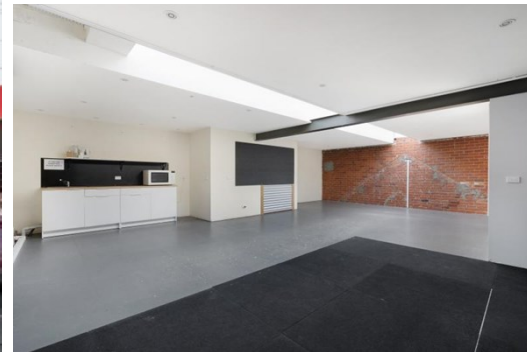


Level 1 1010 High Street, ARMADALE

FOR LEASE



SUPERB OFFICE/MIXED USE OPPORTUNITY

Description

- HIGHLY SOUGHT AFTER LOCATION
- RESIDENCE & OFFICE COMBINED
- RARE OPPORTUNITY

- * First floor office total area of 325 sqm* & well appointed residence
- * Easy rear access via ROW off Kooyong Road
- * Separate entry to residence for split tenancies
- * Outstanding location on Melbourne's most prestigious retail strip
- * First class opportunity surrounded by a quality mixture of fashion retailers, service providers & cafes

Level 1, 1010 High Street Armadale offers a complete work and living package, with kitchen and living areas, a balcony, 4+ bedrooms and a stunning red brick double storey office/ New York style studio space.

FOR AN IMMEDIATE INSPECTION CALL US TODAY!

*Approx

Area m²: 325.00

Rent PA: Contact Agent

Outgoings: Payable by Lessee

Contact: **Jarrold Nankin**
0422 800 228
jarroldnankin@allardshelton.com.au

Patrick Kerr
0451 142 791
patrickkerr@allardshelton.com.au