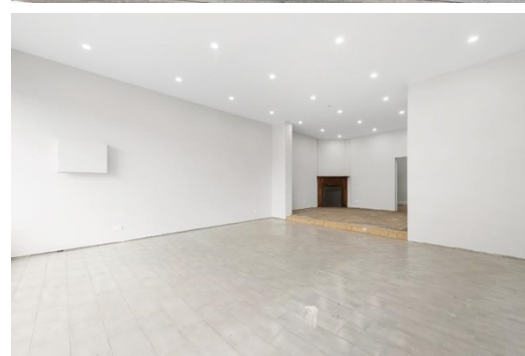
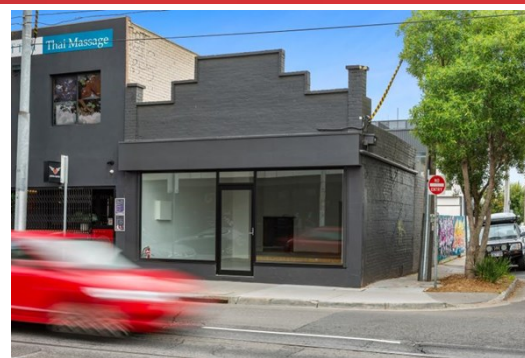


271 Swan Street, RICHMOND

FOR LEASE



HEART OF SWAN ST RICHMOND

Description

- VERSATILE PROPERTY
- FRONT & REAR ACCESS
- EXCELLENT LIGHTING

- * Swan Street frontage
- * Corner exposure
- * Both LED and natural light

Situated in the fantastic Swan Street Richmond
A versatile space ready for an array of uses

FOR AN IMMEDIATE INSPECTION CALL US TODAY!

*approx

Area m²: 204.00

Rent PA: Contact Agent

Outgoings:

Contact: **Patrick Kerr**
0451 142 791
patrickkerr@allardshelton.com.au

Martin Huang
0416 161 166
martinhuang@allardshelton.com.au