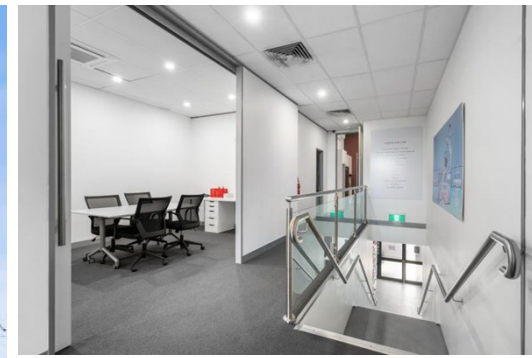


Level 1 289 Geelong Road, KINGSVILLE

FOR LEASE



PRIME INNER WEST OFFICE ACCOMMODATION

Description

- 200 SQM* OF PREMIUM OFFICE SPACE
- DUAL ACCESS
- OPPORTUNITY TO SECURE A WAREHOUSE SPACE

- * 4 x separate self contained offices with desk, shelving and filing cabinets.
- * 13 x separate work stations within the open plan office set up with their own shelving and storage.
- * Large light filled open plan section with impressive raked ceiling and large windows.
- * Kitchen containing dishwasher and all modern facilities.
- * IT communications Room.
- * Large Boardroom.
- * Modern bathroom.

FOR AN IMMEDIATE INSPECTION CALL US TODAY!

*Approx

Area m²: 200.00

Rent PA: Contact Agent

Outgoings:

Contact: **Patrick Kerr**
0451 142 791
patrickkerr@allardshelton.com.au