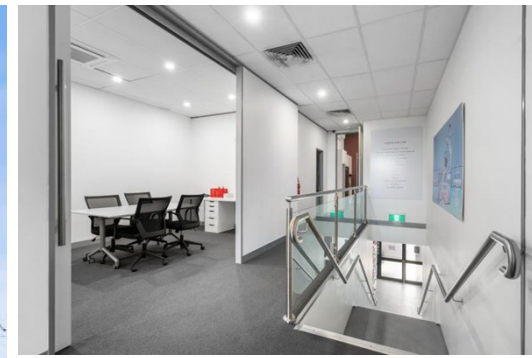


Level 1 289 Geelong Road, KINGSVILLE

FOR LEASE



## PRIME INNER WEST OFFICE ACCOMMODATION

### Description

- 200 SQM\* OF PREMIUM OFFICE SPACE
- DUAL ACCESS
- OPPORTUNITY TO SECURE A WAREHOUSE SPACE

- \* 4 x separate self contained offices with desk, shelving and filing cabinets.
- \* 13 x separate work stations within the open plan office set up with their own shelving and storage.
- \* Large light filled open plan section with impressive raked ceiling and large windows.
- \* Kitchen containing dishwasher and all modern facilities.
- \* IT communications Room.
- \* Large Boardroom.
- \* Modern bathroom.

FOR AN IMMEDIATE INSPECTION CALL US TODAY!

\*Approx

**Area m<sup>2</sup>:** 200.00

**Rent PA:** Contact Agent

**Outgoings:**

**Contact:** **Martin Huang**  
0416 161 166  
martinhuang@allardshelton.com.au