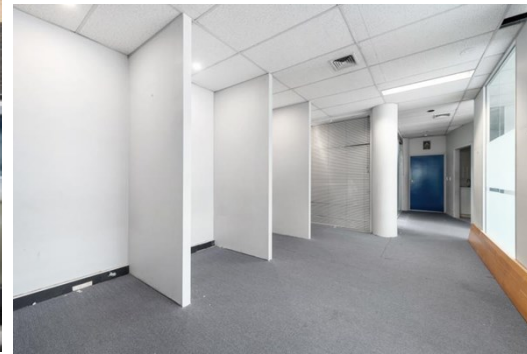
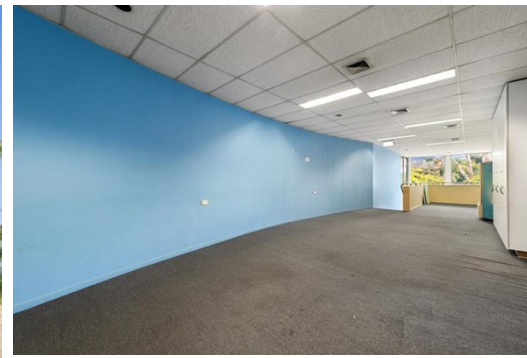


Suite 2 & 3 176-178 Main Street, CROYDON

FOR LEASE



FANTASTIC 'MAIN STREET' OPPORTUNITY

Description

- DUAL OPPORTUNITY TO LEASE
- FLEXIBLE SPACE SUIT HOST OF USES
- 211 SQM* AVAILABLE

* Suite 2 - 111 sqm*

* Suite 3 - 100 sqm*

* Flexible space with wide variety of potential uses (STCA)

* Available together or separately

Situated above KX Pilates is a rare opportunity to be right on the doorstep of Main Street, Croydon. Flexible in use & size, this space is able to be the home of a wide variety of businesses for many years to come.

FOR AN IMMEDIATE INSPECTION CALL US TODAY!

*approx

Area m²: 211.00

Rent PA: Contact Agent

Outgoings:

Contact:

Jarrold Nankin

0422 800 228

jarroldnankin@allardshelton.com.au

Joshua Colosimo

0413 790 309

joshuacolosimo@allardshelton.com.au