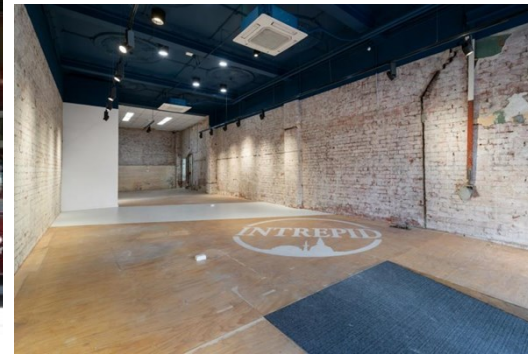
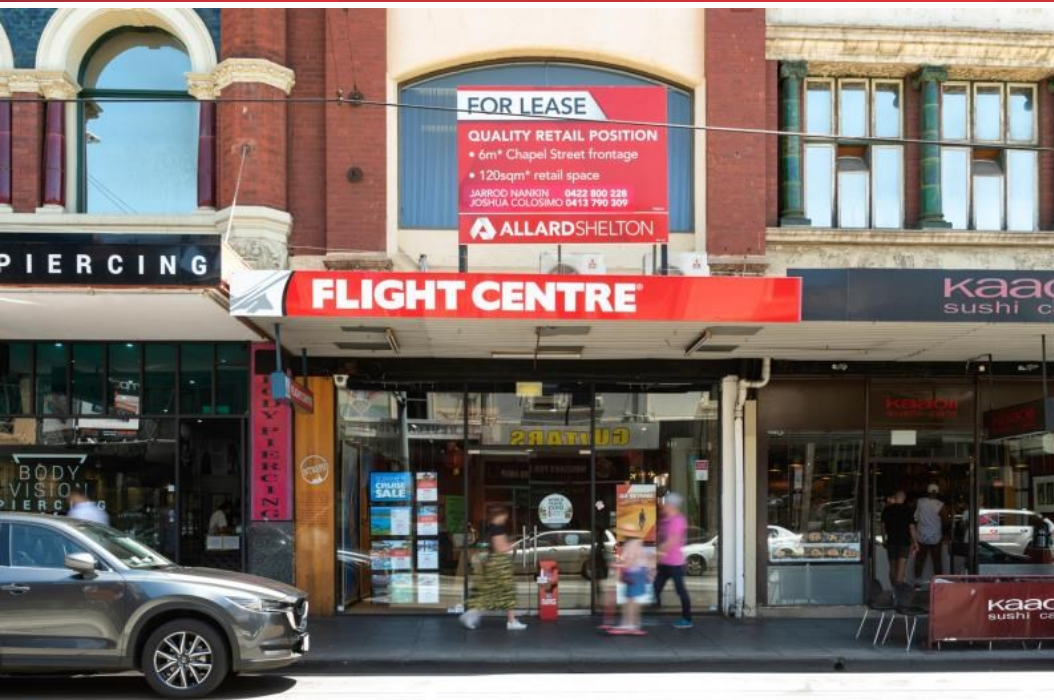


197 Chapel Street, PRAHRAN

FOR LEASE



## FANTASTIC RETAIL OPPORTUNITY WITH EXCELLENT INCENTIVES!

### Description

- HIGH TRAFFIC EXPOSURE
- SURROUNDED BY MAJOR BRANDS
- 6 METRE APPROX. CHAPEL STREET FRONTAGE

Prime Melbourne retail location with high-traffic exposure. Approximately 6 metres of retail frontage along Chapel Street. This fantastic Prahran location has you situated on the corner of High Street & Chapel Street intersection. Surrounded by major retail brands, this precinct has a reputation of being Melbourne's fashion capital. Fantastic public transport options servicing Chapel & High Street, with Prahran railway station approx. 550 metres away. Be amongst the action with this unbeatable space in an unbeatable strip.

FOR IMMEDIATE INSPECTION CALL US TODAY!

\*Approx.

**Area m<sup>2</sup>:** 120.00

**Rent PA:** Contact Agent

**Outgoings:**

**Contact:** Jarrod Nankin  
0422 800 228  
jarrodnankin@allardshelton.com.au

Joshua Colosimo  
0413 790 309  
joshuacolosimo@allardshelton.com.au