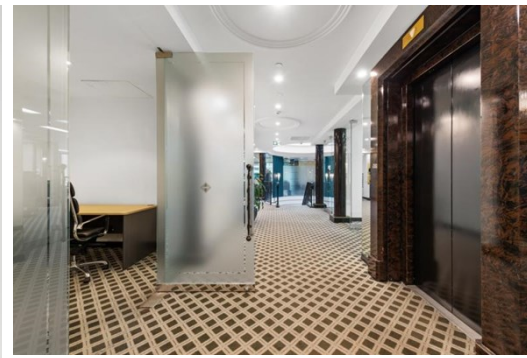


Suite 12 Level 16 530 Little Collins Street,
MELBOURNE

FOR LEASE



FUNCTIONAL SUITE AT A BARGAIN

Description

- FUNCTIONAL SPACE
- PERFECT FOR A BUDGET
- FANTASTIC AMENITIES

* Tenancy area: 12 sqm*

* Strategic location situated in the Exchange Tower at 530 Little Collins Street

* Compact office at a great price

Suite 12 on Level 16 of Exchange Tower offers a unique entry level office with or without a small furnishing. Perfect for meetings or interviews, a small office space that can comfortably house 1-2 people.

FOR AN IMMEDIATE INSPECTION CALL US TODAY!

*approx

Area m²: 12.00

Rent PA: Contact Agent

Outgoings:

Contact: Jarrod Nankin
0422 800 228
jarrodnankin@allardshelton.com.au