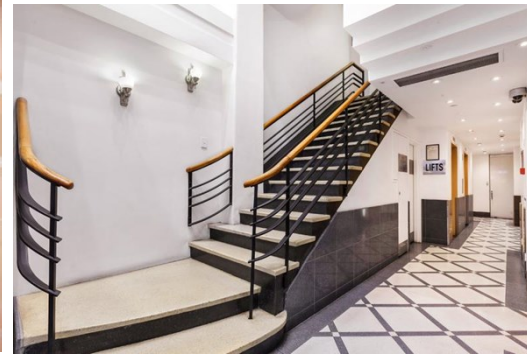


Level 5 Suite 3 94 Elizabeth Street, MELBOURNE FOR LEASE



RARE INNER CITY OFFICE SPACE

Description

- BUILDING AREA: 25 SQM*
- ABUNDANCE OF NATURE LIGHT
- FULLY FUNCTIONAL KITCHENETTE

- * Rare inner city suite for lease
- * Supremely located space, near the corner of Collins & Elizabeth Street
- * Quality amenities ensuring comfort all year round

This cosy suite offers a unique opportunity to break into the business district of the Melbourne CBD. This well lit space will become a home for years to come.

FOR AN IMMEDIATE INSPECTION CALL US TODAY!

*approx

Area m²: 25.00

Rent PA: Contact Agent

Outgoings:

Contact: Jarrod Nankin
0422 800 228
jarrodnankin@allardshelton.com.au