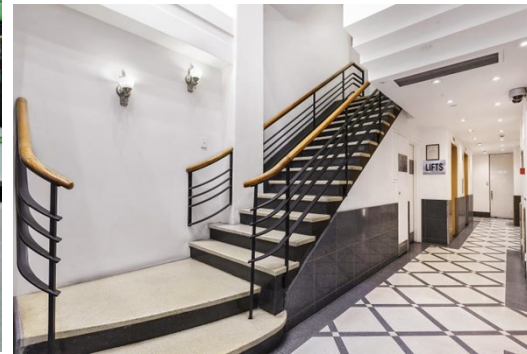


# Level 8 Suite 4 94 Elizabeth Street, MELBOURNE FOR LEASE



## CENTRALLY LOCATED CBD OFFICE

### Description

- EXCEPTIONAL LOCATION
- ALL AMENITIES AT YOUR DOOR STEP
- AMPLE NATURAL LIGHT

\* Area: 15 sqm (approx.)

\* Suit variety of users

\* Benefits from all that Melbourne's CBD has to offer

\* Close proximity to public transport

\* Affordable office space suited to start up

Ideally situated near the corner of Collins and Elizabeth street, this central location CBD office is also highly affordable, making it perfect for a start-up business or low cost retail/service space.

This is an opportunity not to be missed!

FOR AN IMMEDIATE INSPECTION CALL US TODAY!

**Area m<sup>2</sup>:** 15.00

**Rent PA:** Contact Agent

**Outgoings:**

**Contact:**

**Jessica Horan**

0413 001 315

[jessicahoran@allardshelton.com.au](mailto:jessicahoran@allardshelton.com.au)

**Jarrold Nankin**

0422 800 228

[jarroldnankin@allardshelton.com.au](mailto:jarroldnankin@allardshelton.com.au)