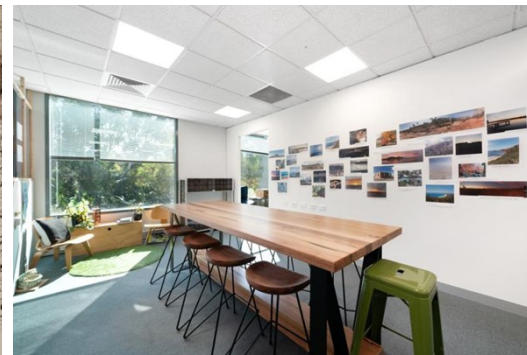


Level 1 South 2 Domville Avenue, HAWTHORN

FOR LEASE



PRIME HAWTHORN LOCATION

Description

- AMPLE ONSITE PARKING
- CLOSE TO HAWTHORN TRAIN STATION
- ABUNDANT NATURAL LIGHT

- * First floor office accommodation: 440 sqm*
- * Quality fit-out with open plan workstations, offices & boardroom
- * Abundant natural light
- * Modern building with impressive foyer
- * Thirteen (13) on-site car spaces
- * Prime Hawthorn located close to Hawthorn station, tram services and Burwood Road retail strip

*approx

Area m²: 440.00

Rent PA: Contact Agent

Outgoings: Payable by Lessee

Contact: **Joseph Walton**
0417 309 347
joewalton@allardshelton.com.au

Patrick Kerr
0451 142 791
patrickkerr@allardshelton.com.au