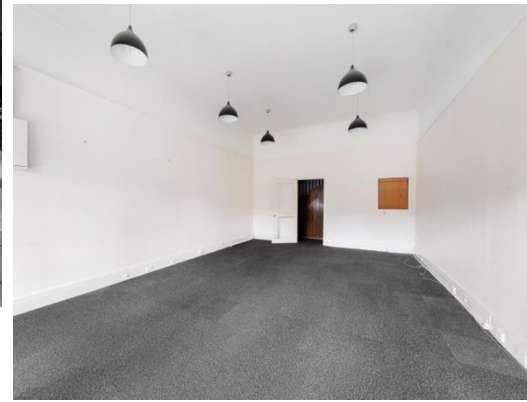


516 Malvern Road, PRAHRAN

FOR LEASE



## PROMINENT HAWKSURN VILLAGE BOUTIQUE RETAIL OPPORTUNITY

### Description

- SURROUNDED BY UP & COMING DEVELOPMENT
- UNPARALLELED SIGNAGE
- LONG SECURE LEASE AVAILABLE

- \* Pop up opportunity available until new year
- \* Total Building Area: 124 sqm (approx.)
- \* Rear car parking
- \* Quality amenities and second floor office
- \* Zoning: Commercial 1
- \* Suits retail, office & hospitality

This gorgeous little shopfront sits in the heart of the highly desirable Hawksburn village. With premium Malvern Road facing windows and vast storage / office / consulting space above and behind it, 516 Malvern road is an opportunity to join one of Melbourne's most secure and ever growing retail strips.

FOR AN IMMEDIATE INSPECTION CALL US TODAY!

**Area m<sup>2</sup>:** 124.00

**Rent PA:** Contact Agent

**Outgoings:**

**Contact:** **Jarrod Nankin**  
0422 800 228  
jarrodnankin@allardshelton.com.au

**Simon Southey**  
0403 924 104  
simonsouthey@allardshelton.com.au